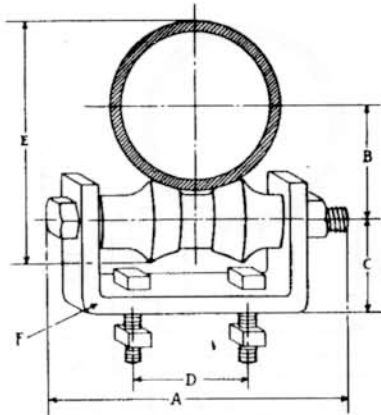


ROLLER AND CHAIR**FIG. 335**

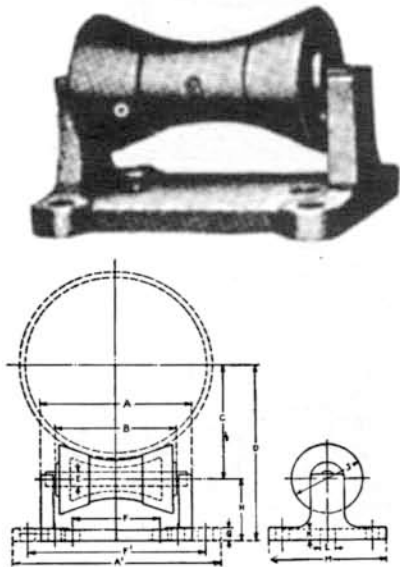
* **SIZE AVAILABILITY:** 2" thru 14".

* **FINISH:** Black, Galvanized, Prime Painted and Red Oxide.

- Made from heavy, low carbon steel.
- Chair provided with 2 bolts for base mounting.
- Can be mounted to wood or Modern fig. 605, 605,
- Can also be used with Modern's Chan all series fig, 1000B and 1000E.
- Primarily used with pipe installations involving movement.
- If pipe is covered, see saddle schedule for correct hanger size.

* **ORDERING:** Specify size, figure number and finish.

PIPE SIZE	ANCHOR BOLT SIZE	DIAMETER BOLT AXLE	A	B	C	D	E
2"	3/8" x 1-1/2"	3/8"	3-1/8"	1-1/2"	1-1/2"	1-1/4"	3-3/8"
2-1/2"	3/8" x 1-1/2"	1/2"	4-1/4"	2"	1-5/8"	1-1/4"	4-1/8"
3"	3/8" x 1-1/2"	1/2"	5-3/8"	2-1/4"	1-3/4"	2"	4-13/16"
3-1/2"	1/2" x 1-1/2"	1/2"	6-1/8"	2-1/2"	2"	2"	5-3/8"
4"	1/2" x 1-1/2"	1/2"	6-3/4"	2-7/8"	2-5/16"	2"	6-1/16"
5"	1/2" x 1-1/2"	1/2"	8"	3-3/8"	2-1/2"	3"	7-5/16"
6"	1/2" x 1-1/2"	1/2"	9-1/8"	3-7/8"	2-3/4"	3-1/8"	8-5/16"
8"	1/2" x 1-1/2"	5/8"	11-1/2"	5-1/8"	3"	3-3/8"	10-5/8"
10"	5/8" x 2"	3/4"	14-1/4"	6-1/8"	3-5/8"	5-1/4"	13-3/8"
12"	5/8" x 2"	3/4"	16-3/4"	7-3/16"	4-1/8"	5-1/2"	15-3/8"
14"	5/8" x 2"	3/4"	19"	8-5/16"	5-1/8"	5-3/4"	17-5/8"
	F		WEIGHT		MAXIMUM		
	SIZE STOCK		PER HD.		LOAD		
2"	1/4" x 1-1/4"		100#		400		
2-1/2"	1/4" x 1-1/4"		150		400		
3"	1/4" x 1-1/4"		175		400		
3-1/2"	3/8" x 1-1/2"		275		600		
4"	3/8" x 1-1/2"		338		600		
5"	3/8" x 1-1/2"		400		600		
6"	3/8" x 2"		550		800		
8"	3/8" x 2"		825		800		
10"	1/2" x 2"		1400		1000		
12"	1/2" x 2"		1665		1000		
14"	1/2" x 2"		1890		1000		

CAST IRON PIPE ROLL AND STAND**FIG. 339**

* **SIZE AVAILABILITY:** 2" thru 30".

* **FINISH:** Black, Galvanized, Prime Painted and Red Oxide.

- Made from malleable iron.
- Two cored holes (L) are provided for anchoring stands.
- On sizes 2" - 3-1/2" and 4" - 6", these holes (L) are on the outside of the stand (see dotted lines and dimension "F").
- On all other size stands, the mounting holes (L) are on the inside of the uprights (see dimension "F").
- There's also a cored hole on each corner of the stand which can be used for anchoring with bolt sizes listed in column "P".
- Columns "R" and "S" in dimension table for fig 340 adjustable pipe roll stand gives the location of the four corner holes.
- If pipe is covered, see saddle schedule for correct size roll.
- Complies with General Services WW-H-171B.
- Complies with Manufacturers Standardization Society SP-69 (Type 44).

* **ORDERING:** Specify size, figure number and finish.

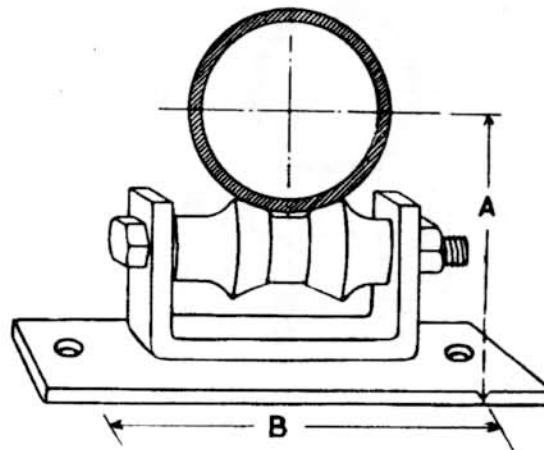
PIPE SIZE	D	C	H	A	A'	M	B	WEIGHT PER HD.	MAX LOAD
2"	3-9/16"	1-13/16"	1-3/4"	4"	8-3/8"	5-3/8"	2-3/4"	690	400
2-1/2"	3-13/16"	2-1/16"	1-3/4"	4"	8-3/8"	5-3/8"	2-3/4"	690	400
3"	4-1/8"	2-3/8"	1-3/4"	4"	8-3/8"	5-3/8"	2-3/4"	690	400
3-1/2"	4-3/8"	2-5/8"	1-3/4"	4"	8-3/8"	5-3/8"	2-3/4"	690	400
4"	4-13/16"	2-3/4"	2-1/16"	5-3/8"	9-7/8"	5-5/8"	3-3/4"	950	900
5"	5-7/16"	3-3/8"	2-1/16"	5-3/8"	9-7/8"	5-5/8"	3-3/4"	950	900
6"	6"	3-15/16"	2-1/16"	5-3/8"	9-7/8"	5-5/8"	3-3/4"	950	900
8"	8-11/16"	5-1/4"	3-7/16"	7-3/4"	8-5/8"	6-5/8"	6"	1600	2000
10"	9-13/16"	6-3/8"	3-7/16"	7-3/4"	8-5/8"	6-5/8"	6"	1600	2000
12"	11-3/8"	7-1/2"	3-7/8"	9-7/8"	10-15/16"	7-7/8"	8"	2790	2900
14" O.D.	12"	8-1/8"	3-7/8"	9-7/8"	10-15/16"	7-7/8"	8"	2790	2900
16" O.D.	13-1/2"	9-1/4"	4-1/4"	11-1/4"	12-3/8"	8-5/8"	9"	4100	4600
18" O.D.	14-5/8"	10-3/8"	4-1/4"	11-1/4"	12-3/8"	8-5/8"	9"	4100	4600
20" O.D.	15-5/8"	11-3/8"	4-1/4"	11-1/4"	12-3/8"	8-5/8"	9"	4100	4600
24" O.D.	17-3/4"	13-3/8"	4-3/8"	12-1/2"	13-1/2"	8-5/8"	10"	5100	6000
30" O.D.	21-13/16"	16-11/16"	5-1/8"	15-3/4"	17"	10-3/4"	12-1/2"	9200	7000
PIPE SIZE	J	E	F	F'	L	K	G	N	P
2"- 3-1/2"	1-7/8"	1-1/2"	-	6-3/8"	1"	9/16"	11/16"	1/2"	3/8"
4"- 6"	2-1/16"	1-1/2"	-	7-7/8"	1"	3/4"	7/8"	1/2"	3/8"
8"- 10"	3-1/4"	3/4"	4"	-	1"	3/4"	7/8"	5/8"	1/2"
12"- 14" O.D.	4"	7/8"	5-3/4"	-	1"	3/4"	7/8"	3/4"	5/8"
16"- 20" O.D.	4-1/2"	1-1/8"	6-3/4"	-	1"	7/8"	1"	13/16"	5/8"
24" O.D.	4-7/16"	1-3/8"	7-1/2"	-	1"	1"	1-1/8"	13/16"	5/8"
30" O.D.	5-1/2"	1-3/4"	10"	-	1"	1-1/4"	1-1/2"	1-1/16"	7/8"

ROLLER & CHAIR with WELDED BASE

* **SIZE AVAILABILITY:** 2" thru 12".

* **FINISH:** Black, Galvanized or Prime Painted.

- This roll hanger is made from heavy, low carbon steel with a cast iron roller.
- The chair is provided with a larger base plate that gives it more stability and strength.
- It can be mounted to wood over I-beam spans or Modern Fig. 605, 606, 607 or 608 bracket series.
- A primary application of this roller chair is with pipe involving movement.
- Another design is for applications where there is no vertical adjustment needed.
- If the pipe is covered, see the saddle schedule for Modern Fig. 341-343A for correct hanger size.



* **ORDERING:** Specify pipe size, figure number, name and finish.

FIG 336

PIPE	SIZE	SIZE			WEIGHT	MAX.
SIZE	BASE PLATE	BOLT HOLES	A	B	PER HD.	LOAD
2"	3/16" X 3" X 6-1/2"	1/2"	3-3/16"	5-1/2"	160	500
2-1/2"	3/16" X 3" X 7"	1/2"	3-13/16"	6"	220	500
3"	3/16" X 3" X 7-7/8"	1/2"	4-3/16"	6-7/8"	256	500
3-1/2"	1/4" X 3-1/2" X 8-3/4"	5/8"	4-11/16"	7-5/8"	500	600
4"	1/4" X 3-1/2" X 9-1/4"	5/8"	5-1/2"	8-1/8"	560	600
5"	1/4" X 4" X 10-3/8"	5/8"	6-1/16"	9-1/4"	660	600
6"	1/4" X 4" X 12"	5/8"	6-13/16"	10-7/8"	860	800
8"	1/4" X 4" X 14-3/4"	3/4"	8-5/16"	13-1/2"	1200	800
10"	1/4" X 4" X 17-1/4"	3/4"	9-15/16"	16"	1800	1000
12"	1/4" X 4" X 19-1/4"	3/4"	11-1/2"	18"	2400	1000

SINGLE ROLLER HANGER

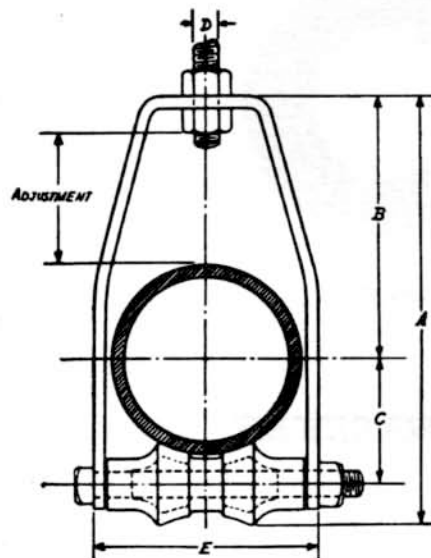
***SIZE AVAILABILITY:** 1" thru 20".

* **FINISH:** Black, Galvanized, Prime Painted, or Red Oxide in all sizes.

- The Figure 661 Roller Hanger is for use on high pressure steam lines or where horizontal movement takes place.
- It is made from heavy, low carbon steel bar stock, steel bolts and nuts and a cast iron roller.
- The lower nut on the suspension rod adjusts the pipe to its proper pitch, and this adjustment can be made after the pipe and hanger are in position.

NOTE: Nuts and washers need to be used on both sides of the top center for proper installation.

- Maximum temperature at roller contact is 450°F.
- Select size of hanger equal to the size of pipe when used without insulation.
- For covered pipe see saddle schedule, Modern Fig. 341 - 343A for correct size hanger.
- Complies with Federal Specification WW-H-171 (Type 44).
- Complies with Manufacturers Standardization Society SP-69 (Type 43).

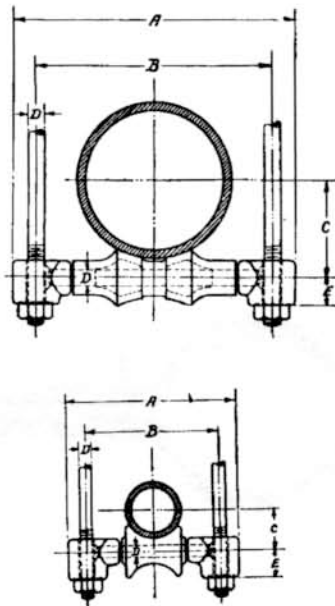


For Pipe 2" to 20"

* **ORDERING:** Specify hanger size, pipe (tube) size, figure number, name and finish

FIG. 661

SIZE	***** DIMENSIONS *****						ADJUST.	WEIGHT	MAX.
PIPE	A	B	C	D	E	F	MENT	PER/HD	LOAD
1"	4-7/16	2-11/16	1-1/16	3/8	1-3/4	3/16 X 1-1/4	1-1/2	70	100
1-1/4"	5	2-15/16	1-1/4	3/8	2-1/4	3/16 X 1-1/4	1-1/2	110	100
1-1/2"	5-9/16	3-5/16	1-3/8	3/8	2-7/16	3/16 X 1-1/4	1-3/4	128	100
2"	5-11/16	3-1/2	1-5/8	3/8	2-15/16	1/4 X 1-1/4	1-3/4	150	150
2-1/2"	6-3/4	4-1/8	1-15/16	1/2	3-7/16	1/4 X 1-1/4	2	200	200
3"	7-1/2	4-7/16	2-5/16	1/2	4-1/16	1/4 X 1-1/4	2	225	300
3-1/2"	8-1/16	4-11/16	2-9/16	1/2	4-11/16	1/4 X 1 1/4	2	250	350
4"	8-7/8	5	2-7/8	5/8	5-5/16	1/4 X 1-1/4	2	400	450
5"	10-1/16	5-9/16	3-7/16	5/8	6-9/16	3/8 X 1-1/2	2	500	550
6"	11-3/16	6-3/16	4	3/4	7-13/16	3/8 X 1-1/2	2	635	700
8"	13-11/16	7-5/16	5-1/16	7/8	10-1/16	3/8 X 2	2	1100	700
10"	16-5/8	8-5/8	6-5/16	7/8	12-9/16	3/8 X 2-1/2	2	1812	850
12"	18-11/16	9-5/8	7-3/8	7/8	14-9/16	1/2 X 2	2	3300	1000
14"OD	21-15/16	11-1/2	8-1/8	1	15-1/2	1/2 X 2	3	3600	1000
16"OD	24-1/8	12-1/2	9-1/8	1	17-1/2	1/2 X 2-1/2	3	5300	1000
18"OD	26-3/4	13-3/4	10-5/16	1	19-3/4	1/2 X 3	3	5500	1200
20"OD	29-1/4	14-7/8	11-3/8	1	21-3/4	5/8 X 3	3	7900	1400

SINGLE ROLLER HANGERS**FIG. 475**

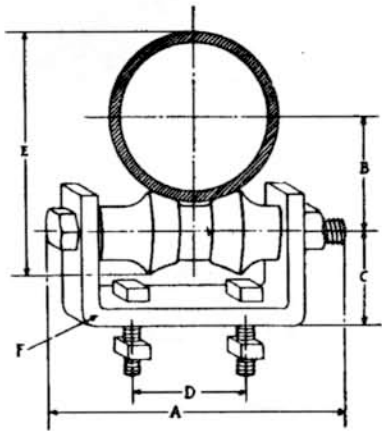
* **SIZE AVAILABILITY:** 1" thru 30".

* **FINISH:** Black, Galvanized or Prime Painted.

- The Roller Hanger is provided with Modern figure 750 roller, cross rod and supporting malleable iron end sockets.
- This hanger is designed to be used where expansion and contraction situations apply.
- The malleable iron end sockets allow for vertical adjustment at the point of the roller.
- All end sockets have recessed bottoms to receive a hex nut from the supporting rods to help prevent loosening due to vibration.
- If pipe is covered, see Saddle schedule Modern figures 341 - 343A for correct hanger size.
- Complies Federal Specifications WW-H-171E (Type 42).
- Complies with Manufacturers Standardization Society SP-69 (Type 41).

* **ORDERING:** Specify pipe size, insulation if applicable, figure number, name and finish.

PIPE SIZE	A	B	C	D	E	WT PER 100	LOAD RATING	STD PACK
1"	4-1/4"	3-1/8"	1-1/16"	3/8"	3/4"	88	400	25
1-1/4"	4-5/8"	3-1/2"	1-1/4"	3/8"	3/4"	94	400	25
1-1/2"	4-13/16"	3-11/16"	1-3/8"	3/8"	3/4"	100	400	25
2"	5-5/16"	4-3/16"	1-5/8"	3/8"	3/4"	100	400	25
2-1/2"	6-5/16"	5"	1-15/16"	1/2"	3/4"	131	500	25
3"	6-15/16"	5-5/8"	2-5/16"	1/2"	3/4"	156	500	25
3-1/2"	7-9/16"	6-1/4"	2-9/16"	1/2"	3/4"	169	500	25
4"	8-1/16"	6-3/4"	2-7/8"	1/2"	3/4"	250	500	25
5"	9-5/16"	8"	3-7/16"	1/2"	3/4"	300	500	BULK
6"	10-5/16"	9"	4"	1/2"	3/4"	310	800	BULK
8"	13-3/16"	11-5/8"	5-1/16"	5/8"	7/8"	550	800	BULK
10"	16-1/16"	14-5/16"	6-5/16"	3/4"	1"	950	1200	BULK
12"	18-7/8"	16-3/4"	7-3/8"	7/8"	1-1/8"	1400	1600	BULK
14" O.D.	19-7/8"	17-3/4"	8-1/8"	7/8"	1-7/16"	1600	2200	BULK
16" O.D.	21-7/8"	19-3/4"	9-1/8"	1"	1-1/2"	2150	2800	BULK
18" O.D.	24"	21-7/8"	10-5/16"	1-1/8"	1-1/2"	3250	3500	BULK
20" O.D.	27-1/4"	24-1/4"	11-3/8"	1-1/4"	1-5/8"	4800	3800	BULK
24" O.D.	31"	28-5/8"	14"	1-1/4"	1-13/16"	7255	4800	BULK
30" O.D.	38-1/2"	35-1/2"	17-7/16"	1-1/4"	2-1/4"	12700	5500	BULK

ROLLER & CHAIR WITH BOLTS & NUTS

* **SIZE AVAILABILITY:** 2" thru 12".

* **FINISH:** Black, Galvanized, Prime painted or Red oxide.

- This roller chair and bolts and nuts are made from low carbon steel, and is furnished with a cast iron roller
- It can be furnished with mounting bolts and Modern Modern Fig. 1000 or 2000 Chan-All nuts.
- Assembly can be used with all Modern Chan-All series and Fig. 605, 606, 607 or 608 Brackets.
- The maximum temperature recommendation at the roller is 450°.
- This roller hanger is designed to support pipe where horizontal movement occurs due to expansion and contraction.
- Where standard, bare pipe support occurs, order hanger size equal to pipe size.
- If pipe is covered, see Modern Fig. 341-343A Saddle schedules for correct hanger size.

* **ORDERING:** Specify roller size, pipe size, figure number, name and finish.

FIG. 1335

PIPE SIZE	BOLT SIZE	DIAMETER B.T. AXLE	A	B	C	D	E	STOCK F	WEIGHT PER HD.	MAX LOAD
2"	3/8"x 1-1/2"	3/8"	3-1/8"	1-1/2"	1-1/2"	1-1/4"	3-3/8"	1/4"x 1-1/4"	100	500
2-1/2"	3/8"x 1-1/2"	1/2"	4-1/4"	2"	1-5/8"	1-1/4"	4-1/8"	1/4"x 1-1/4"	156	600
3"	3/8"x 1-1/2"	1/2"	5-3/8"	2-1/4"	1-3/4"	2"	4-13/16"	1/4"x 1-1/4"	175	600
3-1/2"	1/2"x 1-1/2"	1/2"	6-1/8"	2-1/2"	2"	2"	5-3/8"	3/8"x 1-1/2"	275	650
4"	1/2"x 1-1/2"	1/2"	6-3/4"	2-7/8"	2-5/16"	2"	6-1/16"	3/8"x 1-1/2"	338	650
5"	1/2"x 1-1/2"	1/2"	8"	3-3/8"	2-1/2"	3"	7-5/16"	3/8"x 1-1/2"	400	650
6"	1/2"x 1-1/2"	1/2"	9-1/8"	3-7/8"	2-3/4"	3-1/8"	8-5/16"	3/8"x 2"	550	800
8"	1/2"x 1-1/2"	5/8"	11-1/2"	5-1/8"	3"	3-3/8"	10-5/8"	3/8"x 2"	825	1000
10"	5/8"x 1-1/2"	3/4"	14-1/4"	6-1/8"	3-5/8"	5-1/4"	13-3/8"	1/2"x 2"	1400	1450
12"	5/8"x 1-1/2"	3/4"	16-1/4"	7-3/16"	4-1/8"	5-1/2"	15-3/8"	1/2"x 2"	1663	1800

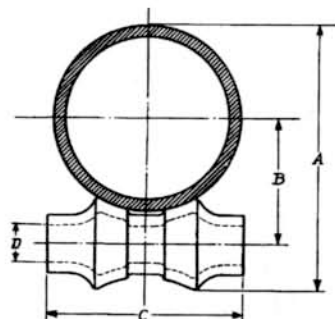
CAST IRON PIPE ROLLERS

Fig. 750
For Pipe 2" to 20"

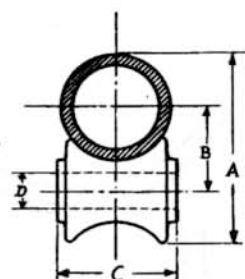


Fig. 750
For Pipe 1" to 1 1/2"

* **SIZE AVAILABILITY:** 1" thru 30".

* **FINISH:** Black, Galvanized, Prime Painted or Red Oxide.

- The roller is made from malleable iron.
- This long pattern roller is longer than Modern Fig. 751.
- The heavier core gives it added strength.
- It is commonly used with high pressure lines or when vibration and movement exist.
- See Modern Fig. 335, 336, 385, 475 and 661 for additional roller applications.
- For covered pipe, see saddle schedule, Modern Fig 341 - 343A for correct roller size

* **ORDERING:** Specify roller size, figure number, name and finish.

FIG. 750

PIPE SIZE	DIMENSIONS			D *BOLT DIAM.	WEIGHT PER HD.
	A	B	C		
1"	2-7/16"	1-1/16"	1-7/16"	3/8"	23
1-1/4"	2-7/8"	1-1/4"	1-13/16"	3/8"	23
1-1/2"	3-3/16"	1-3/8"	2"	3/8"	23
2"	3-3/8"	1-5/8"	2-1/2"	3/8"	25
2-1/2"	4-1/8"	1-15/16"	3"	1/2"	32
3"	4-13/16"	2-5/16"	3-5/8"	1/2"	50
3-1/2"	5-3/8"	2-9/16"	4-1/4"	1/2"	65
4"	6-1/16"	2-7/8"	4-3/4"	1/2"	100
5"	7-5/16"	3-7/16"	6"	1/2"	135
6"	8-5/16"	4"	7"	1/2"	195
8"	10-5/8"	5-1/16"	9-1/4"	5/8"	310
10"	13-3/8"	7-3/8"	11-1/2"	3/4"	500
12"	15-3/8"	7-5/16"	13-1/2"	7/8"	800
14"	17-7/16"	8-1/8"	14-1/4"	1"	1000
16"	19-5/8"	9-1/8"	16-1/4"	1"	1400
18"	22"	10-5/16"	18-1/4"	1-1/8"	1800
20"	24-3/8"	11-3/8"	20-1/4"	1-1/4"	2200
24"	29-5/8"	14"	24-1/4"	1-1/2"	3000
30"	36-5/8"	17-7/16"	30-1/4"	1-7/8"	8500