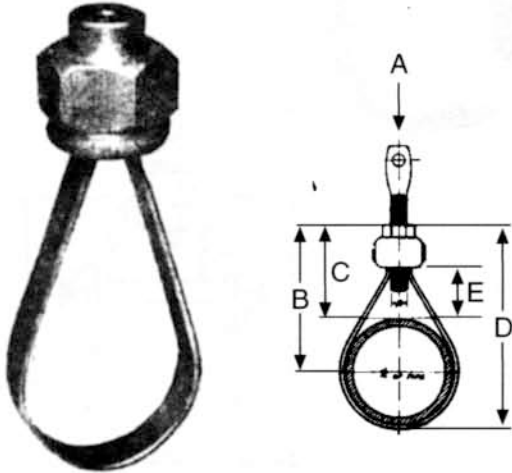


ADJUSTABLE BAND HANGER-COPPER PLATED
(*SPRINKLER HANGER*)



* **SIZE AVAILABILITY:** 1/2" thru 4".

* **FINISH:** Copper Plated or PVC Coated.

- This band hanger and hexagon nut are made from low carbon steel.
- The band may be removed from the nut, spread apart to go over the tubing, and then inserted back into the nut.
- The top steel, hexagon adjusting nut's design allows for easy installation.

NOTE: Screwing the supporting rod into and through the nut locks the ring into position and must be done on every hanger installed.

- Modern Fig. 11 is designed for stationary pipe lines and where no expansion or contraction occurs.
- It is also recommended for installations of aluminum, brass, glass, conduit and copper pipe lines.
- Maximum recommended temperature is 450°F.
- Complies with Federal Specifications WW-H- 171e (Type 9).
- Complies with Manufacturers Standardization Society SP-69 (Type 9).

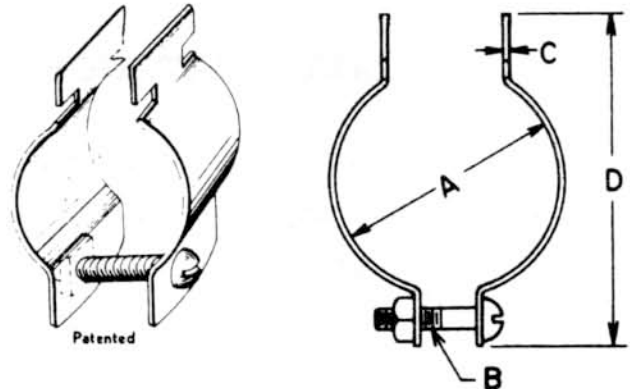
* **ORDERING:** Specify tube size, figure number and name.

FIG. 11

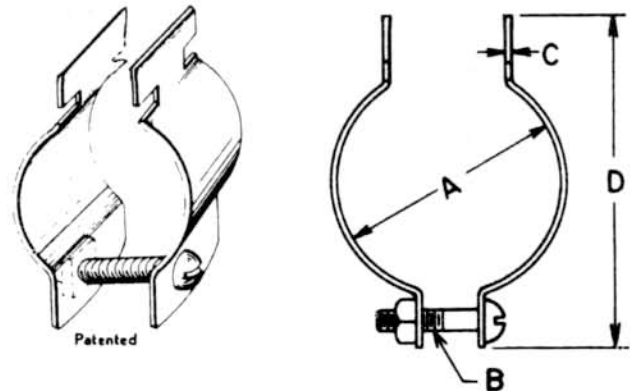
TUBE SIZE	ADJUSTABLE RING					WEIGHT PER/HD	STANDARD PACKING	MAX. LOAD
	A	B	C	D	E			
1/2"	3/8"	2-9/16	2-1/4	2-7/8	1-1/4	10	100	250
3/4"	3/8"	2-9/16	2-1/8	3	1-1/4	10	100	250
1"	3/8"	2-11/16	2-1/8	3-1/4	1-1/4	11	100	250
1-1/4"	3/8"	2-11/16	2	3-3/8	1-1/4	13	100	250
1-1/2"	3/8"	2-13/16	2	3-5/8	1-1/4	17	100	250
2"	3/8"	3-5/16	2	4-3/8	1-1/4	19	100	250
2-1/2"	3/8"	3-5/16	1-3/4	4-3/8	1	19	100	250
3"	1/2"	4-5/16	2	5-1/8	1	36	50	400
4"	1/2"	5-7/16	2	7-1/16	2	75	50	600

SPLIT CT CHAN-ALL RING

- * **SIZE AVAILABILITY:** 1/2" thru 6".
- * **FINISH:** Copper Plated.
 - This split Chan-All clamp is designed to fit **only** Modern Fig 1000 or 1000B Chan-All series.
 - I.D. sizes of this clamp is made to fit copper tube.
 - When the ring is inserted into the Chan-All slot and tightened on the tube, it will hold the tube firmly against the Chan-All which will prevent movement in any direction.
 - The split design of this clamp allows for tubing installations in between existing lines by inserting and twisting the clamp into the Chan-All section.
 - See Modern's Chan-All catalog for additional information.
 - For iron pipe sizes, see Modern Fig. 1001A.
- * **ORDERING:** Specify tube size, figure number and name.

**FIG. 1003A*****SPLIT CT CHAN-ALL RING***

- * **SIZE AVAILABILITY:** 1/2" thru 6".
- * **FINISH:** Copper Plated.
 - This split Chan-All clamp is designed to fit **only** Modern Fig 1000E or 1000F Chan-All series.
 - I.D. sizes of this clamp is made to fit copper tube.
 - When the ring is inserted into the Chan-All slot and tightened on the tube, it will hold the tube firmly against the Chan-All which will prevent movement in any direction.
 - The split design of this clamp allows for tubing installations in between existing lines by inserting and twisting the clamp into the Chan-All section.
 - See Modern's Chan-All catalog for additional information.
 - For iron pipe sizes, see Modern Fig. 1001E.
- * **ORDERING:** Specify tube size, figure number and name.

**FIG. 1003E**

TUBE SIZE	A	B	C	1003A D	1003E D	WEIGHT PER HD	STD PACK
1/2"	.625"	1/4" X 1"	1-1/8" X .050"	1-3/4"	2"	6	100
3/4"	.875"	1/4" X 1"	1-1/8" X .050"	2-1/8"	2-3/8"	7-1/2	100
1"	1.125"	1/4" X 1"	1-1/8" X .050"	2-3/8"	2-3/4"	11	100
1-1/4"	1.375"	1/4" X 1"	1-1/8" X .050"	2-5/8"	3"	11	100
1-1/2"	1.625"	1/4" X 1-1/4"	1-1/8" X .050"	2-7/8"	3-1/8"	12	100
2"	2.125"	1/4" X 1-1/4"	1-1/8" X .065"	3-3/8"	3-3/4"	18	100
2-1/2"	2.625"	1/4" X 1-1/4"	1-1/8" X .083"	3-3/4"	4-1/2"	18	100
3"	3.125"	1/4" X 1-1/4"	1-1/8" X .083"	4-3/8"	5"	30	100
3-1/2"	3.625"	1/4" X 1-1/4"	1-1/8" X .083"	5-1/4"	5-1/2"	50	50
4"	4.125"	1/4" X 1-1/4"	1-1/8" X .083"	5-1/2"	6-1/4"	61	25
5"	5"	1/4" X 1-1/4"	1-1/8" X .083"	6-1/2"	7"	87	25
6"	6"	1/4" X 1-1/2"	1-1/8" X .083"	8-1/8"	8-1/4"	95	25

CT CHAN-ALL RING

- * **SIZE AVAILABILITY:** 1/2" thru 3".
- * **FINISH:** Copper Plated.
- This Chan-All clamp is designed to fit **only** Modern Fig 1000 or 1000B Chan-All series.
- I.D. sizes of this clamp is made to fit copper tube.
- When the ring is inserted into the Chan-All slot and tightened on the tube, it will hold the tube firmly against the Chan-All which will prevent movement in any direction.
- See Modern's Chan-All catalog for additional information.
- For iron pipe sizes, see Modern Fig. 1001.
- * **ORDERING:** Specify tube size, figure number and name.

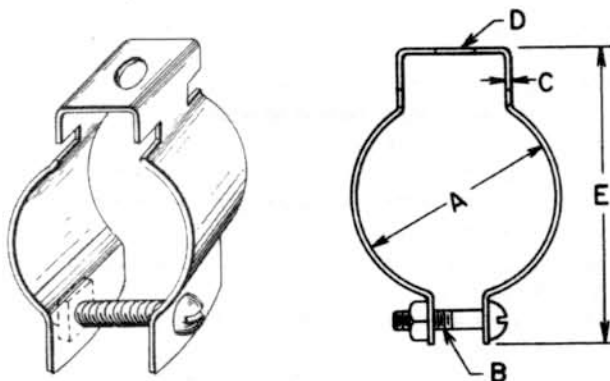


FIG. 1003

TUBE				1003	WEIGHT	STD
SIZE	A	B	C	D	PER HD	PACK
1/2"	.625"	1/4" X 1"	1-1/8" X .050"	1/4"	6	100
3/4"	.875"	1/4" X 1"	1-1/8" X .050"	3/8"	7-1/2	100
1"	1.125"	1/4" X 1"	1-1/8" X .050"	3/8"	11	100
1-1/4"	1.375"	1/4" X 1"	1-1/8" X .050"	3/8"	11	100
1-1/2"	1.625"	1/4" X 1-1/4"	1-1/8" X .050"	3/8"	12	100
2"	2.125"	1/4" X 1-1/4"	1-1/8" X .065"	3/8"	18	100
2-1/2"	2.625"	1/4" X 1-1/4"	1-1/8" X .083"	3/8"	18	100
3"	3.125"	1/4" X 1-1/4"	1-1/8" X .083"	3/8"	30	100

CLEVIS HANGER W/SHIELD FOR COPPER TUBE

* **SIZE AVAILABILITY:** 1-1/2" thru 8" Hangers.

* **FINISH:** Black, Galvanized, Prime
Painted or Red Oxide in all sizes.

- The In-Cle-Shield Hangers are used for insulated pipe or tube to prevent cutting or crushing of the covering at the pipe hanger point.
- Shields are made from 12, 14, 16, 18, 20 and 22 gauge galvanized steel.
- The hangers are regularly furnished black. Can be furnished galvanized.
- Shields and hangers are welded together (591 + 344).
- Hangers and shields welded together allows for hanger installation before the pipe or tube is insulated.
- Insulation of 360° can be furnished with the hanger upon request, thus eliminating piecing of insulation on the job.
- Hangers can be furnished with 8", 12", 18" and 24" long shields.
- "Selection Table" below assures of ordering correct hanger size for insulated pipe.
- Complies with Manufacturers Standardization Society SP-69 (Type 1 & Type 40).

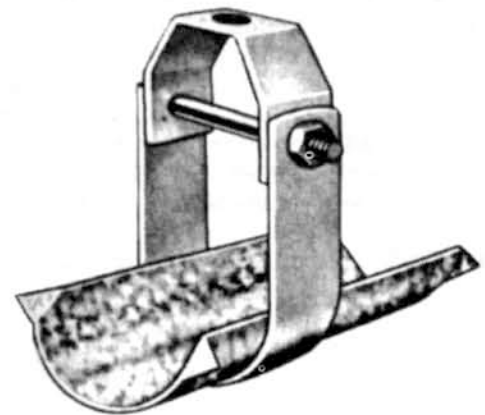


FIG 594 CT

* **ORDERING:** Specify shield size, hanger size, figure number and give pipe (tube) size and thickness of covering.

HGR	MAX.	SHIELD	SHIELD					WEIGHT	MAX
SIZE	OD INSUL.	SIZE	LENGTH	A	B	C	D	PER HD	LOAD
1-1/2"	1-7/8"(2.0)	M1	8" or 12"	2-3/4"	4-1/8"	3/8"	1-1/8"	40	250
2"	2-3/8"(2.5)	2	8" or 12"	3-3/8"	4-1/8"	3/8"	1-1/2"	50	250
2-1/2"	2-7/8"(3.0)	3	8" or 12"	4-1/8"	5-7/8"	1/2"	1-1/2"	100	300
3"	3-1/8"(3.5)	5	8" or 12"	4-7/8"	6-3/4"	1/2"	1-1/2"	140	300
3"	3-5/8"(3.5)	6	8" or 12"	4-7/8"	6-3/4"	1/2"	1-1/2"	140	300
3-1/2"	4-1/8"(4.0)	7	8" or 12"	5"	6-3/4"	1/2"	1-1/2"	150	300
4"	4-5/8"(4.5)	8	8" or 12"	5-3/8"	7-1/2"	1/2"	1-1/2"	165	400
5"	5-9/16"(5.5)	10	8" or 12"	6"	8-7/8"	5/8"	1-3/4"	260	500
6"	6-5/8"(6.5)	12	8" or 12"	7"	10-3/8"	3/4"	1-3/4"	365	500
8"	7-5/8"(7.5)	13	12" or 18"	8-1/4"	13-3/8"	7/8"	2-1/2"	650	800
8"	8-5/8"(8.5)	14	12" or 18"	8-1/4"	13-3/8"	7/8"	2-1/2"	650	800

LT CLEVIS FOR COPPER TUBE - PVC COATED

- * **SIZE AVAILABILITY:** 1/2" thru 6".
- * **FINISH:** Copper Plated with PVC Coating.
 - This hanger is made from copper plated, low carbon steel with PVC coating.
 - The light clevis hanger provides a vertical adjustment of 1-1/2". By adjusting the lower nut, the pipe line is assured of a proper pitch.
 - The top half of the hanger is fitted over the outside of the lower u-strap giving it added strength.
 - The top nut prevents loosening by preventing vibration.
 - Nuts and washers are not included with the hanger and must be ordered separately. **NOTE:** Nuts and washers need to be used on both sides of the top part for proper installation.
 - The PVC allows for ideal installations for copper tube as well as glass, brass, iron or aluminum piping.

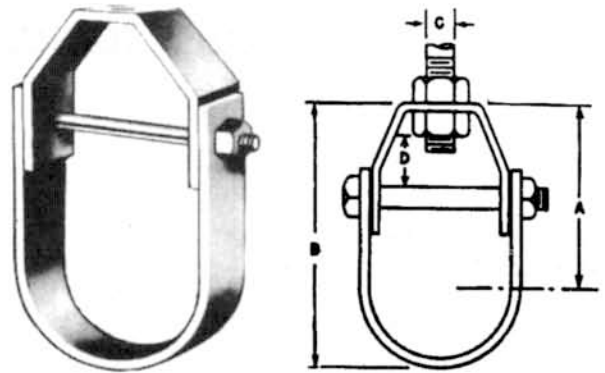


FIG. 403

- * **ORDERING:** Specify tube size, figure number and name.

COPPER TUBE SIZE	A	B	C	D	MAX LOAD	STD PACK	WT PER/HD
1/2"	1-7/8"	2-5/16"	3/8"	3/4"	100	100	16
3/4"	2-7/16"	3"	3/8"	1-1/8"	100	100	21
1"	2-9/16"	3-1/4"	3/8"	1-1/8"	200	100	22
1-1/4"	2-5/8"	3-9/16"	3/8"	1-1/8"	200	100	29
1-1/2"	2-3/4"	3-3/4"	3/8"	1-1/8"	200	100	31
2"	3-1/16"	4-1/4"	3/8"	1-1/8"	250	100	36
2-1/2"	3-3/4"	5-1/8"	3/8"	1-1/4"	250	50	62
3"	4"	5-5/8"	1/2"	1-1/4"	250	50	82
4"	4-3/4"	6-7/8"	1/2"	1-1/4"	250	50	110
5"	5-1/8"	7-1/2"	1/2"	1-1/4"	300	25	150
6"	5-3/4"	9"	5/8"	1-1/2"	300	25	165

WIRE PIPE HOOKS

- * **SIZE AVAILABILITY:** 1/2" thru 2".
- * **FINISH:** Copper Plated.
 - This hook is designed for light weight copper tube.
 - The sharp pointed leg ends facilitate hammering for wood installations.
 - These hooks come in different lengths to make tube installation possible when hanging one under the other.

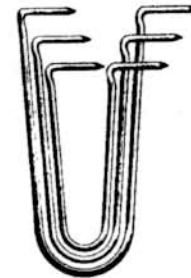


FIG. 560 CT

- * **ORDERING:** Specify tube size, length, figure number and name.

TUBE SIZE	1/2"	1/2"	3/4"	3/4"	1"	1"	1"	1-1/4"	1-1/4"	1-1/2"	1-1/2"	2"	2"
LENGTH	4"	6"	4"	6"	4"	6"	8"	6"	8"	6"	8"	8"	10"
WT/HD	6	8	6	8	6	8	10	8	11	8	11	11	13
STD PACK	100	100	100	100	100	100	100	100	100	100	100	100	100

U-BOLT HANGER FOR COPPER TUBE

* **SIZE AVAILABILITY:** 1/2" thru 2".

* **FINISH:** Electro Copper Plated

- All U-bolts are made from low carbon steel and are copper plated.
- U-bolts can be furnished with 2 or 4 copper plated nuts which must be ordered separately.
- The legs have 1" of NC threading on each end.
- Longer tangents and threads can be made by special order.
- The rod size is 1/4" diameter for all copper U-bolt sizes.

* **ORDERING:** Specify tube size, figure number and name.

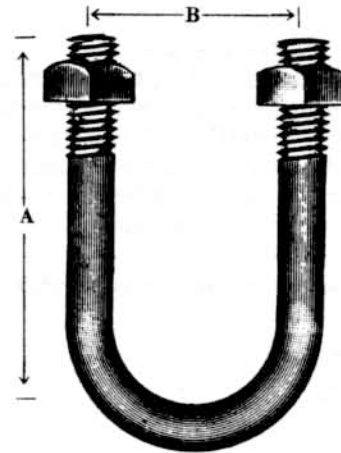


FIG. 306

TUBE				WEIGHT	STD
SIZE	A	B	STOCK	PER HUNDRED	PACK
1/2"	1-5/8"	15/16"	1/4"	5	100
3/4"	1-7/8"	1-3/16"	1/4"	5	100
1"	2-1/8"	1-7/16"	1/4"	7	100
1-1/4"	2-3/8"	1-11/16"	1/4"	8	100
1-1/2"	2-5/8"	1-15/16"	1/4"	9	100
2"	3-1/8"	2-7/16"	1/4"	10	100

NU WAY SHIELD HANGER FOR INSULATED TUBE

* **SIZE AVAILABILITY:** 1-1/2" thru 6"

* **FINISH:** Electro-galvanized, Prime
Painted or Red Oxide in all sizes.

- The Nu- Way Shield Hangers are used for insulated pipe or tube to prevent cutting or crushing of the covering at the pipe hanger point.
- Shields are made from 12, 14, 16, 18 and 20 gauge galvanized steel.
- The hangers are regularly furnished Galvanized.
- Shields and hangers are welded together (Fig. 26 & Fig. 344 thru 6").
- Hangers and shields welded together allows for hanger installation before the pipe or tube is insulated.
- Insulation of 360° can be furnished with the hanger upon request.
- Hangers can be furnished with 8" or 12" long shields.
- See "Shield Size Selection Table" Modern Fig. 344 to assure of ordering correct hanger size for insulated pipe.
- Complies with Manufacturers Standardization Society SP-69 (Type 10 & Type 40).

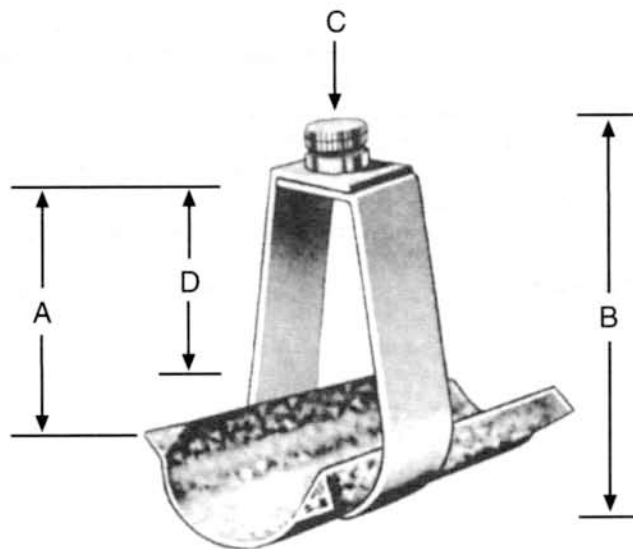


FIG. 264 CT

* **ORDERING:** Specify shield size, hanger size, figure number and give pipe (tube) size and thickness of covering.

HANGER	SHIELD	MAX OD	SHIELD					WEIGHT	MAX
SIZE	SIZE	INSULATION	LENGTH	A	B	C	D	PER HD	LOAD
1-1/2"	M1	1-7/8"(2.0)	8" or 12"	2-1/2"	4-1/8"	3/8"	1-3/4"	30	150
2"	2	2-3/8"(2.5)	8" or 12"	3-11/16"	4-11/16"	3/8"	1-3/4"	40	150
2-1/2"	4	2-7/8"(3.0)	8" or 12"	4-3/4"	6-1/4"	3/8"	2"	50	200
3"	6	3-5/8"(3.5)	8" or 12"	5-1/16"	6-7/8"	3/8"	2"	60	200
3-1/2"	7	4"(4.0)	8" or 12"	5-5/16"	7-3/8"	3/8"	2"	70	200
4"	8	4-5/8"(4.5)	8" or 12"	5-9/16"	7-7/8"	3/8"	2"	80	300
5"	10	5-9/16"(5.5)	8" or 12"	6-11/16"	9-1/2"	1/2"	2-1/2"	100	300
6"	12	6-5/8"(6.5)	8" or 12"	7-3/16"	10-1/2"	1/2"	2-1/2"	160	400

HANGER ADJUSTERS

* **SIZE AVAILABILITY:** 1/4", 3/8".

* **FINISH:** Electro Copper Plated.

- This adjuster is made from malleable iron with a flattened, low carbon steel swivel eye.
- It is recommended for tube sizes 1/2" through 2".
- The adjuster is tapped NC threading.
- It is furnished with a 1/4" swivel eye for both 1/4" and 3/8" bolt thread tapping.
- This adjuster is most commonly used with Modern Fig. 48 or 49.

* **ORDERING:** Specify rod size, figure number and name.



FIG. 119

* **SIZE AVAILABILITY:** 1/4" thru 1/2".

* **FINISH:** Electro Copper Plated.

- This adjuster is made from malleable iron with a flattened, low carbon steel swivel eye.
- The Modern Fig 121 is a larger and heavier patterned adjuster than the Fig. 119.
- It is recommended for tube sizes 1/2" through 6".
- The adjuster is tapped NC threading.
- It is furnished with a 3/8" swivel eye for 1/4", 3/8 and 1/2" bolt thread tapping.
- This adjuster is most commonly used with Modern Fig. 48 or 49.

* **ORDERING:** Specify rod size, figure number and name.



FIG. 121

BEADED PIPE STRAP

- * **SIZE AVAILABILITY:** 1/4" thru 1-1/2".
- * **FINISH:** Copper Plated.
 - The strap is made from low carbon steel, copper plated.
 - A formed rib on all sizes gives added strength..
 - It is generally used on bare copper tube.
 - It is made with 5/16" holes for easy nailing..
 - All sizes are supplied with mounting nails.

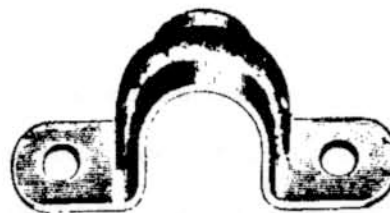


FIG. 66

TUBE SIZE	1/4"	3/8"	1/2"	3/4"	1"	1-1/4"	1-1/2"
C TO C HOLE	1"	1-5/8"	1-1/2"	1-7/8"	2-1/2"	2-3/4"	3-1/8"
STANDARD PACK	100	100	100	100	100	100	100

LIGHT PATTERN EYE NUT

- * **SIZE AVAILABILITY:** 3/8" or 1/2".
- * **FINISH:** Copper Plated.
 - It is made from malleable iron, copper plated.
 - The design is a half bail size to Modern Fig. 80N.
 - The size availability of this eye nut is limited to hanging copper tube sizes 4" or smaller.
- * **ORDERING:** Specify rod size, name and figure number.



FIG. 80

SIZE - A	B	C	LOAD	STD PACK	WT PER HD
3/8"	1-1/16"	3/8"	200	100	10
1/2"	1-1/8"	1/2"	400	100	16

BOLT THREAD STEEL SOCKET - COPPER

- * **SIZE AVAILABILITY:** 1/4" thru 1/2".
- * **FINISH:** Copper Plated.
 - The socket is made from low carbon, copper plated steel.
 - The flattened eye allows for easy installation with Modern Fig. 48 or 49, copper band rings or Fig. 38, perforated bar.
 - There is approximately 3/4" of BT threading inside the threaded end.
- * **ORDERING:** Specify rod size, figure number, part number and name.

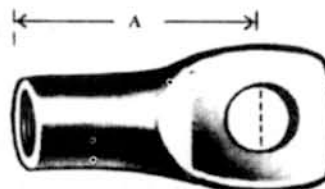


FIG. 83

SIZE	EYE SIZE	A	WT PER/HD	MAX LOAD	STD PACK
#0 - 1/4"	1/4"	1-3/8"	4	100	100
#1 - 3/8"	3/8"	1-3/8"	8	200	100
#2 - 1/2"	3/8"	1-3/8"	10	300	100

COPPER TUBE HANGER

* **SIZE AVAILABILITY:** 3/4" thru 6".

* **FINISH:** Copper Plated.

- This hanger is made from low carbon steel with copper plating.
- The hanger is an extra heavy style, copper band ring - government type.
- These hangers are rust resistant but not rust proof.
- This copper band ring can be used on insulated tube as well as bare copper pipe.
- Modern Fig. 49 is used with Fig. 38, 83, 119 or 121.

* **ORDERING:** Specify tube size, figure number and name.



FIG. 59

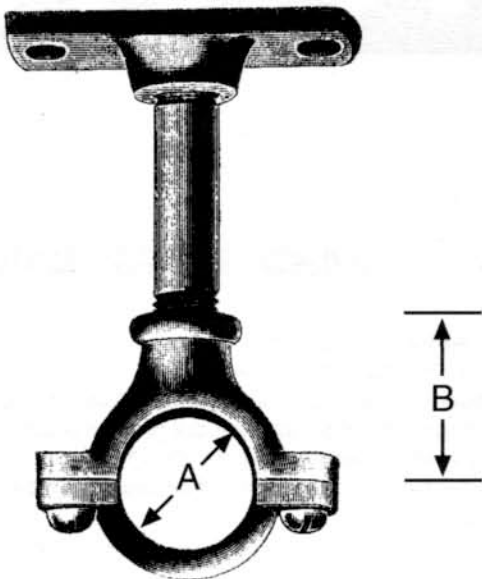
COPPER TUBE	SIZE	BOLT	ADJUSTER	RING ONLY	STD
SIZE	STOCK	TAPPING	REQUIRED	WT PER HD.	PACK
1/2"	3/4" X 1/8"	1/4" or 3/8"	#1 - B	13	100
3/4"	3/4" X 1/8"	1/4" or 3/8"	#1 - B	16	100
1"	3/4" X 1/8"	1/4" or 3/8"	#1 - B	16	100
1-1/4"	1" X 1/8"	3/8"	#2 - I	30	100
1-1/2"	1" X 1/8"	3/8"	#2 - I	32	100
2"	1" X 1/8"	3/8"	#2 - I	37	100
2-1/2"	1" X 1/8"	3/8"	#2 - I	44	50
3"	1-1/4" X 1/8"	1/2"	#3 - A	72	50
3-1/2"	1-1/4" X 1/8"	1/2"	#3 - A	76	50
4"	1-1/4" X 1/8"	1/2"	#3 - A	80	25
5"	1-1/4" X 1/8"	1/2"	#3 - A	97	25
6"	1-1/4" X 3/16"	5/8"	#4 - A	176	25

COPPER SPLIT RING HANGER

* **SIZE AVAILABILITY:** 1/2" thru 4".

* **FINISH:** Electro copper plated.

- The Copper Tube Extension Split Clamp is made from malleable iron.
- This clamp is used to suspend copper tube from the ceiling, the wall and the floor.
- A flat mounting plate can be supplied to facilitate installation.
- With the two screw design, the lower half of the clamp can be put in place before the final installation is made.
- By removing one of the screws, the top half will swivel allowing for a more simplified installation.
- The clamp is designed to fit tightly on the tubing and can also be used to guide the copper tubing.
- This hanger is tapped 3/8" BT through 2", the larger sizes are 1/2" B.T.
- Complies with Federal Specifications WW-H-171 (Type 25).
- Complies with Manufacturers Standardization Society SP-69 (Type 12).



* **ORDERING:** Specify size, figure number, name and finish.

FIG. 58

COPPER TUBE	BOLT	ANCHOR			WEIGHT	MAXIMUM	STD
SIZE	TAPPING	BOLT SIZE	A	B	PER HD	LOAD	PACK
1/2"	3/8"	1/4"	3/4"	1-1/4"	10	180	100
3/4"	3/8"	1/4"	7/8"	1-1/2"	12	180	100
1"	3/8"	1/4"	1"	1-5/8"	14	180	100
1-1/4"	3/8"	1/4"	1-1/8"	2"	15	180	100
1-1/2"	3/8"	1/4"	1-1/4"	2-1/8"	16	180	100
2"	3/8"	1/4"	1-1/2"	2-5/8"	22	180	100
2-1/2"	1/2"	3/8"	2"	3-1/2"	32	280	50
3"	1/2"	3/8"	2-1/8"	4-1/8"	42	280	50
4"	1/2"	3/8"	2-7/8"	5-5/8"	56	280	50
PLATE	3/8"	1/4"	4-3/4" LONG	2-3/8" WIDE	18	180	100
	1/2"	1/4"	4-3/4" LONG	2-3/8" WIDE	18	180	100

COPPER TUBE HANGERS

The Modern Pipe Supports Corporation

PERFORATED EXTENSION BAR FOR COPPER TUBE

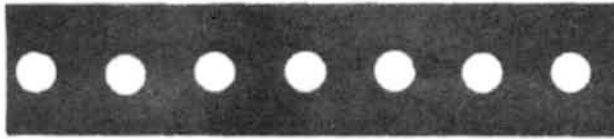


FIG. 38

- * **SIZE AVAILABILITY:** 3/4" - 22ga.
- * **FINISH:** Copper Plated Steel.
 - This perforated bar can be used with Modern Fig. 48, 49 or 83.
 - These rolls come packed 10 per box (100 feet).
- * **ORDERING:** Specify size, figure number and name.

BAND RING HANGER FOR COPPER TUBE

- * **SIZE AVAILABILITY:** 1/2" , thru 4".
- * **FINISH:** Copper Plated or PVC Coating.
 - This hanger is made from low carbon steel and is copper plated.
 - These hangers are rust resistant but not rust proof.
 - Modern Fig 48 is used with Fig. 38, 83, 119 or 121.
 - This copper band ring can be used on insulated tube as well as bare copper pipe.
- * **ORDERING:** Specify tube size, figure number, name and finish.



FIG. 48

- * **SIZE AVAILABILITY:** 1/2" thru 6".
- * **FINISH:** Copper Plated or PVC Coating.
 - This hanger is made from .99% pure copper.
 - These hangers are highly recommended and since they are made of all copper material they will not be affected by electrolysis due to atmospheric conditions.
 - Modern Fig. 49 is used with Fig. 38, 83, 119 or 121.
 - This copper band ring can be used on insulated tube as well as bare copper pipe.
- * **ORDERING:** Specify tube size, figure number, name and finish.



FIG. 49

FIG. 48

TUBE SIZE	STOCK SIZE	BOLT SIZE	WT PER HD	STD. PACK	MAX. LOAD
1/2"	3/4" - 16 ga.	1/4"	7	100	50
3/4"	3/4" - 16 ga.	1/4"	8	100	50
1"	3/4" - 16 ga.	1/4"	9	100	50
1-1/4"	3/4" - 16 ga.	1/4"	10	100	50
1-1/2"	3/4" - 16 ga.	1/4"	11	100	50
2"	7/8" - 14 ga.	1/4"	13	100	100
2-1/2"	7/8" - 14 ga.	1/4"	24	100	100
3"	7/8" - 14 ga.	1/4"	40	100	100
3-1/2"	7/8" - 14 ga.	1/4"	45	100	100
4"	1-1/8" - 12 ga.	1/4"	47	100	150

FIG. 49

TUBE SIZE	STOCK SIZE	BOLT SIZE	WT PER HD	STD. PACK	MAX. LOAD
1/2"	1/16" x 3/4"	1/4" x 3/4"	9	100	50
3/4"	1/16" x 3/4"	1/4" x 3/4"	11	100	50
1"	1/16" x 3/4"	1/4" x 3/4"	12	100	50
1-1/4"	1/16" x 1"	1/4" x 3/4"	14	100	100
1-1/2"	1/16" x 1"	1/4" x 3/4"	17	100	100
2"	1/16" x 1"	1/4" x 3/4"	25	100	100
2-1/2"	3/22" x 1"	1/4" x 3/4"	35	100	150
3"	3/22" x 1"	5/16" x 1"	44	100	150
3-1/2"	3/22" x 1"	5/16" x 1"	48	100	150
4"	3/22" x 1"	5/16" x 1"	53	100	150
5"	3/22" x 1"	5/16" x 1"	57	BULK	150
6"	3/22" x 1"	5/16" x 1"	80	BULK	150

ADJUSTABLE SWIVEL RING-COPPER PLATED (SPRINKLER HANGER)

* **SIZE AVAILABILITY:** 1/2" thru 8".

* **FINISH:** Copper Plated, PVC Coated.

- The Nu- Way Adjustable Swivel Hanger is a steel band formed in one piece and has a double thickness of stock at the point which carries the load.
- The band can be easily slipped over the pipe during installation and provides added adjustment that most other hangers don't have.
- The swivel nut on top is knurled to give a better gripping surface, and is manufactured with countersunk threads that will not become damaged during shipping and installation.
- Turning the swivel nut will raise or lower the pipe to the desired position.
- A locking nut on the supporting rod can be used after adjustment to prevent loosening where excessive vibration may occur.
- This hanger is also designed to meet NFPA minimum rod sizes.
- Factory Mutual approved.
- Complies with Federal Specifications WW-H-171 (Type 10).
- Complies with Manufacturers Standardization Society SP-69 (Type 10).

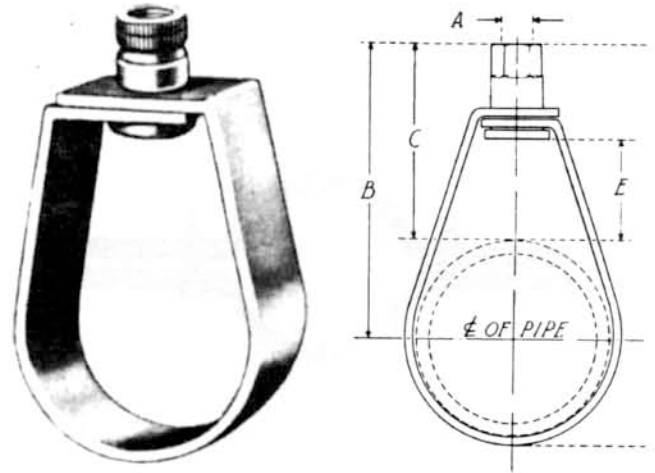


FIG. 29

* **ORDERING:** Specify size, figure number and name.

TUBE						STOCK	WEIGHT	STD	MAX
SIZE	A	B	C	D	E	SIZE	PER HD	PKG	LOAD
1/2"	3/8"	3-1/2"	3-3/16"	4"	2-1/4"	7/8" X 16 GA	20	100	200
3/4"	3/8"	3-3/8"	3"	4"	2"	7/8" X 16 GA	20	100	200
1"	3/8"	3-1/4"	2-11/16"	3-7/8"	1-5/8"	7/8" X 16 GA	20	100	300
1-1/4"	3/8"	3-3/8"	2-11/16"	4-3/16"	1-3/4"	7/8" X 16 GA	22	100	300
1-1/2"	3/8"	3-11/16"	2-7/8"	4-9/16"	1-7/8"	7/8" X 16 GA	25	100	300
2"	3/8"	3-13/16"	2-3/4"	5"	1-3/4"	7/8" X 16 GA	27	100	300
2-1/2"	3/8"	3-1/2"	2-1/2"	4-1/2"	1-3/4"	7/8" X 16 GA	30	50	400
3"	3/8"	4"	3"	5-1/4"	2"	1" X 14 GA	34	50	500
3-1/2"	3/8"	5-5/16"	3-1/4"	7-3/8"	2"	1" x 14 GA	40	50	500
4"	3/8"	5-9/16"	3-1/4"	7-7/8"	2"	1" x 14 GA	54	50	700
5"	1/2"	6-11/16"	3-7/8"	9-1/2"	2-1/2"	1-1/4" x 12 GA	75	BULK	700
6"	1/2"	7-3/16"	3-7/8"	10-1/2"	2-1/2"	1-1/4" x 12 GA	86	BULK	800

EXTENSION PIPE CLAMP FOR TUBE

* **SIZE AVAILABILITY:** 1/2" thru 5".

* **FINISH:** Copper Plated or PVC Coated.

- The extension riser clamp is used for supporting copper tube risers.
- This clamp is made from low carbon steel and copper plated.
- The design of this clamp allows for distributing pipe loads over a greater area.
- By fastening the clamp per bolt torque, industry standards, it will clamp tightly to the copper tube and can be placed anywhere along the length of the tube.
- Recommended use with stationary tube lines.
- This copper tube clamp can be used on insulated tube as well as bare copper pipe.
- Complies Federal Specifications WW-H-171e (Type 8).
- Complies with Manufacturers Standardization Society SP-69 (Type 8).

* **ORDERING:** Specify tube size, figure number, name and finish.

FIG. 28

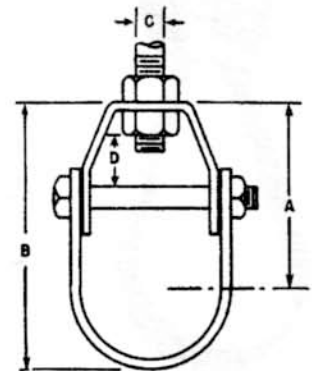
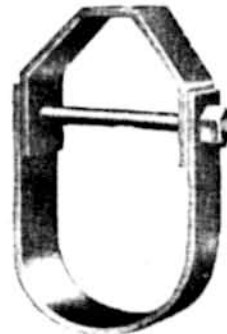
TUBE SIZE	STOCK SIZE	BOLT SIZE	WEIGHT PER HUNDRED	MAXIMUM LOAD
1/2"	1/8" x 1"	5/16" x 1-1/2"	70	50
3/4"	1/8" x 1"	5/16" x 1-1/2"	72	50
1"	1/8" x 1"	5/16" x 1-1/2"	75	50
1-1/4"	1/8" x 1"	5/16" x 1-1/2"	77	50
1-1/2"	1/8" x 1"	5/16" x 1-1/2"	80	50
2"	1/8" x 1-1/4"	5/16" x 1-1/2"	105	100
2-1/2"	3/16" x 1"	3/8" x 1-1/2"	130	150
3"	3/16" x 1"	3/8" x 2"	145	150
3-1/2"	3/16" x 1"	3/8" x 2"	150	150
4"	3/16" x 1"	3/8" x 2"	162	150
5"	3/16" x 1-1/4"	3/8" x 2"	180	200

CLEVIS HANGER FOR TUBE

* **SIZE AVAILABILITY:** 1/2" thru 6".

* **FINISH:** Electro copper plated.

- The Clevis Hanger provides a vertical adjustment of 1-1/2". By adjusting the lower nut, the pipe line is assured of proper pitch. The top nut locks it in place.
- This feature allows for adjustment before or after tubing is installed. **NOTE:** Nuts and washers need to be used on both sides of the top part for proper installation.
- Nuts are not included with the hanger and must be ordered separately.
- Recommended use with copper tube lines.
- Made from carbon steel, copper plated.
- The top half of hanger is fitted over the outside of the lower u-strap, giving it added strength.
- Complies with Federal Specifications WW-H-171e (Type 12).
- Similar application compliance to MSS Type 1.



* **ORDERING:** Specify copper tube size, figure number, name and finish.

FIG. 27

TUBE					STOCK	SIZE	WEIGHT	STD	MAX
SIZE	A	B	C	D	TOP	BOTTOM	PER HD	PKG	LOAD
1/2"	1-7/8"	2-5/16"	3/8"	3/4"	7/8" X 13 GA	7/8" X 13 GA	16	100	300
3/4"	2-7/16"	3"	3/8"	1-1/8"	7/8" X 13 GA	7/8" X 13 GA	21	100	300
1"	2-9/16"	3-1/4"	3/8"	1-1/8"	7/8" X 13 GA	7/8" X 13 GA	22	100	300
1-1/4"	2-5/8"	3-9/16"	3/8"	1-1/8"	7/8" X 12 GA	7/8" X 12 GA	29	100	300
1-1/2"	2-3/4"	3-3/4"	3/8"	1-1/8"	7/8" X 12 GA	7/8" X 12 GA	31	100	300
2"	3-1/16"	4-1/4"	3/8"	1-1/8"	7/8" X 12 GA	7/8" X 12 GA	36	50	300
2-1/2"	3-3/4"	5-1/8"	3/8"	1-1/4"	1/8" X 1"	1/8" X 1"	62	50	350
3"	4"	5-5/8"	1/2"	1-1/4"	1/8" X 1-1/4"	1/8" X 1-1/4"	82	50	350
3-1/2"	4-3/8"	6-1/4"	1/2"	1-1/4"	1/8" X 1-1/4"	1/8" X 1-1/4"	98	25	400
4"	4-3/4"	6-7/8"	1/2"	1-1/4"	3/16" X 1-1/4"	1/8" X 1-1/4"	125	25	400
5"	5-1/4"	9"	1/2"	1-1/4"	3/16" X 1-1/4"	1/8" X 1-1/4"	195	BULK	500
6"	6-3/4"	9-1/2"	5/8"	1-1/4"	3/16" X 1-1/4"	1/8" X 1-1/4"	225	BULK	500